

CARS - MOTORCYCLES - RALLY

DRIVER BRIEFING.

MEET THE TEAM

DANIEL DAVIES - OPERATIONS

PEMBREY STAFF

LAURA BIRKITT – ADMIN.

NIGEL HUGHES

INSTRUCTORS

RHODRI JENKINS

RECOVERY & PADDOCK

MEDICAL SERVICES - PEMBREY CIRCUIT PARAMEDIC MEDICAL TEAM.

MARSHALLING - PEMBREY TRACK DAY MARSHAL'S - THE GUYS AND GALS IN ORANGE

WELCOME TO PEMBREY CIRCUIT

Has everybody signed the Trackday documents?

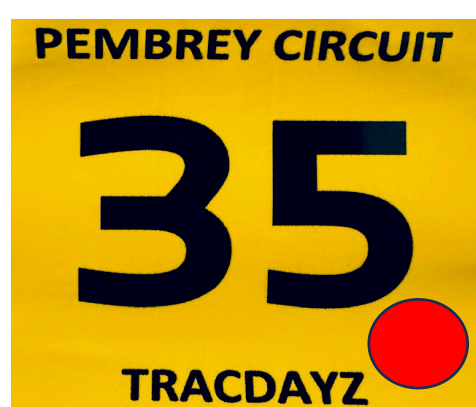


• Has everyone received an armband?



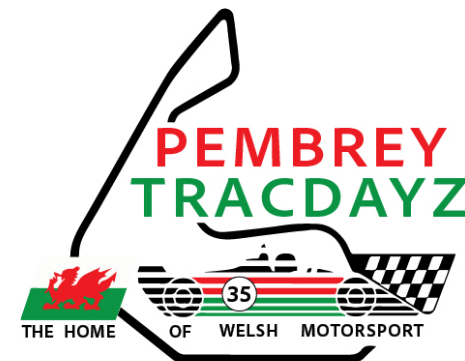
Has everyone received a vehicle sticker?

On leaving the briefing room you will receive an attendance sticker to be placed on your track day number plate. ●





DISCLAIMER



CARS - MOTORCYCLES - RALLY

**MOTORSPORTS CAN BE DANGEROUS AND MAY
INVOLVE INJURY OR DEATH.**

**I have read, signed and understood the Tracdayz Documents
and will comply with all circuit regulations plus any
supplemental regulations and final instructions for this event
given by the organiser and / or venue owner.**

ASSEMBLY AREA



Your sessions will start from the Assembly Area situated at the bottom end of the paddock.

You will be required to show your wristband to the assembly marshal.

Your vehicle sticker must be attached to your vehicle.

Your vehicle exhaust will be checked for suitability.

The Event Controller will call your particular group to the Assembly Area via the PA system.

You will be directed either straight on to the circuit or down the pit lane for the commencement of your session.

SIGHTING LAPS

On the first session of each group, you will receive circuit familiarisation lap behind the pace car.

This is to ensure you are familiar with the entry, exit and marshalling posts which are operational on the day.

You will then do a further 2 warm up laps behind the safety car

NO OVERTAKING!!!



ACCESSING THE CIRCUIT

Entry to the circuit is via the Assembly Area situated at the Top end of the paddock.

You may then be directed down

The pit lane entry, having obeyed lights or signal from a marshal.

Check for other vehicles on the circuit and keep to the entry side of the track until well clear of the pits.



EXITING THE CIRCUIT

Only leave the circuit at the pit lane entry, or as directed by the marshals.

Signal your intention to leave the circuit on approach of Carters Curve, using indicators if fitted or raising a hand in the air

(if in an open car)

Continue signalling until you have exited the circuit.



STOPPING ON THE CIRCUIT

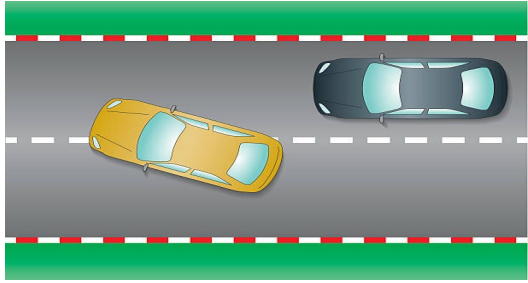
Only stop in case of mechanical breakdown or a signal to do so from a marshal.

If forced to stop on the circuit or a run-off area, park as safely as possible, far from the track and preferably behind a barrier.

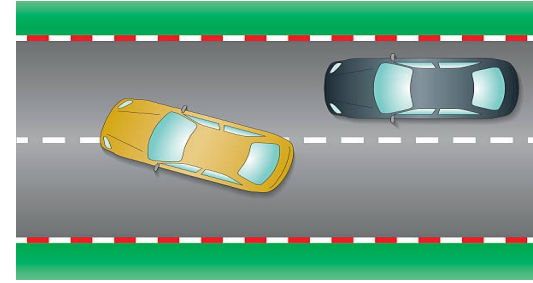
All participants must move behind safety barriers or on top the tyre wall.

Obey any instructions given by the marshals.





OVERTAKING



Use rear view mirrors frequently to check for faster vehicles.

If a faster vehicle approaches, move to right-hand side of the circuit, to signal your intention to allow the faster vehicle to pass on the racing line.

Only overtake when the car in front has acknowledged your approach and moved to the right-hand side of the circuit.

Once the faster car has passed, return to the racing line when it is safe to do so, but be aware there may be more than one car overtaking at any one time.

Vehicles should preferably overtake on the straights.

Failure to comply with these regulations may result in exclusion from participation.

TRACK LIMITS

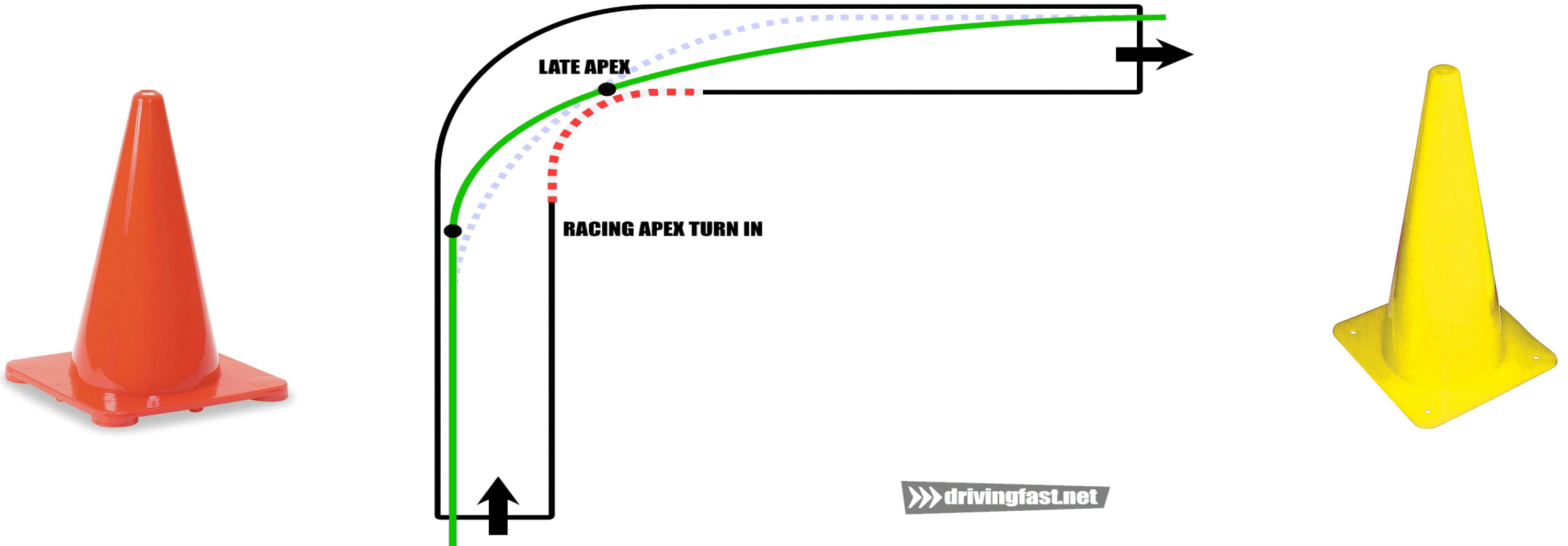
It is mandatory that all participants drive within the permitted limits of the circuit.

Circuit limits are defined by the white lines that run around both sides of the track, interspersed with curves on the apex and outside corners which at those parts serve as track limits.



MARKER CONES

Turning and apex cones are situated around the circuit to assist you with the racing line.



FLAG SIGNALS / LIGHTS



YELLOW FLAG / LIGHTS

Track hazard.

Slow down.

Be prepared to stop.

No overtaking.



RED FLAG / LIGHTS

Major Incident, the session has been stopped.

Reduce your speed, prepare to stop and/or return to the paddock as instructed by the marshals.

Do not stop at the incident.

Be aware the track may be blocked and emergency vehicles may be attending the incident.



GREEN FLAG / LIGHTS

**The Circuit is clear,
you can safely access
the Circuit.**



STRIPED RED / YELLOW

Beware! Track condition has changed !!!



**This may only be shown for a
couple of laps.**

**When withdrawn it does not mean
that the track has returned to its
original condition.**

BLACK FLAG

**You MUST slow down and
return to the pits at the end
of the that lap.**

Report to Track Steward.

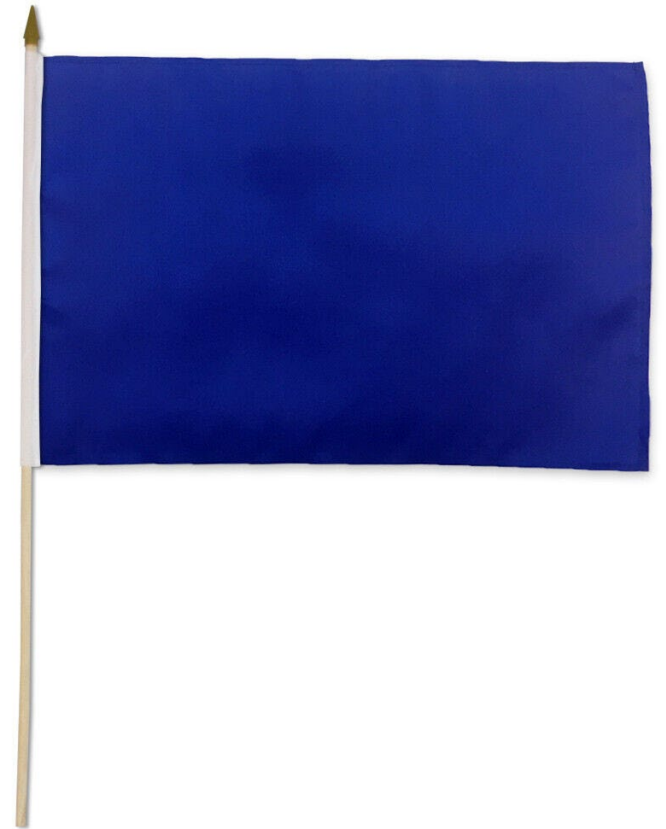
**Your vehicle number may
be displayed on the
Start / Finish line**



BLUE FLAG

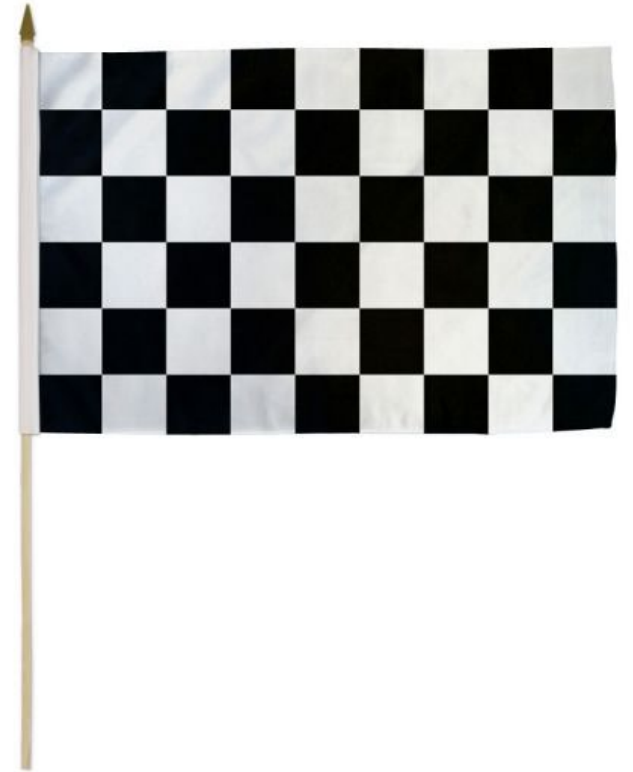
There is a driver approaching who is faster and needs to overtake.

Follow overtaking procedures and move to the right to allow the faster driver to pass on the left.



CHEQUERED FLAG

**Only shown on the
Start/Finish
line when the session is over.**
**Slow down, No overtaking and
complete the remainder of
the lap to the circuit exit point
or as directed.**



CIRCUIT CONDUCT

Racing or driving too close to other vehicles is not permitted.

At all times you must drive in a manner conducive to general safety.

Please be courteous to your fellow participants.



NOISE REGULATIONS

**Any vehicle using the circuit must comply with a
Maximum noise emissions level of 96.0dba.**

**Testing procedures are done by
DRIVE - BY testing.**

**Refunds cannot be offered should
your vehicle fail the drive by test.**



PASSENGERS

Will be permitted provided if they have signed on as a driver or an additional driver for the event.

We do not allow passengers unless they also intend to participate in driving.





DRIVERS MUST



Wear a suitable approved helmet and suitable footwear.

Wear suitable clothing with arms and legs fully covered. It is recommended that you wear suitable fire-retardant overalls.

Wear a seat belt as per RTA or MSUK regulations.

Fix their vehicle identification sticker on the rear offside window / quarter panel of the participating vehicle.

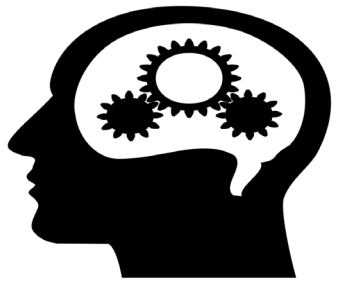
**Ensure that their windows are in a closed position,
allowing a maximum 50mm ventilation gap.**

Not drive while under the influence of alcohol or intoxicating drugs.

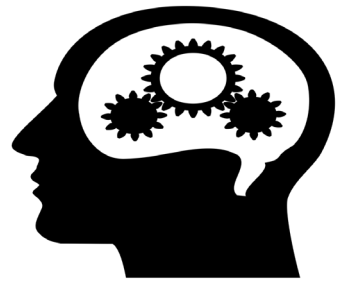
Not eat, drink or chew gum on the circuit.

Not have any loose objects within the vehicle.

Not conduct any timing procedures.



REMEMBER



Circuit activities start at approximately 9am and there is limited access to paddock area thereafter.

You must not bring animals into the circuit.

- **Please supervise children carefully.**

Do not exceed 15 mph on any service road or in the paddock.

- **Refuel only in the designated area.**

Cold tyres have less grip, please drive carefully for at least the first couple of laps to warm your tyres.

Grass has less adhesion than tarmac.

Stay within the track limits.



OPENING TIMES

Circuit gates open

7.30am

Restaurant open

8.00am

Briefing

8.50am

Lunch break

12.30pm – 1.30pm

Lunch served

12.10pm – 2.00pm

Track day ends at

4.30pm

Circuit gates close

6.00pm



RUNNING TIMES

Track sessions start 9.15am

Circuit Configuration - National

Sighting laps + Group 1 • Sighting laps + Group 2

Open Pit Lane

Restart 1.30pm

Circuit Configuration – Clubmans

Sighting laps + Group 1 • Sighting laps + Group 2

Open Pit Lane

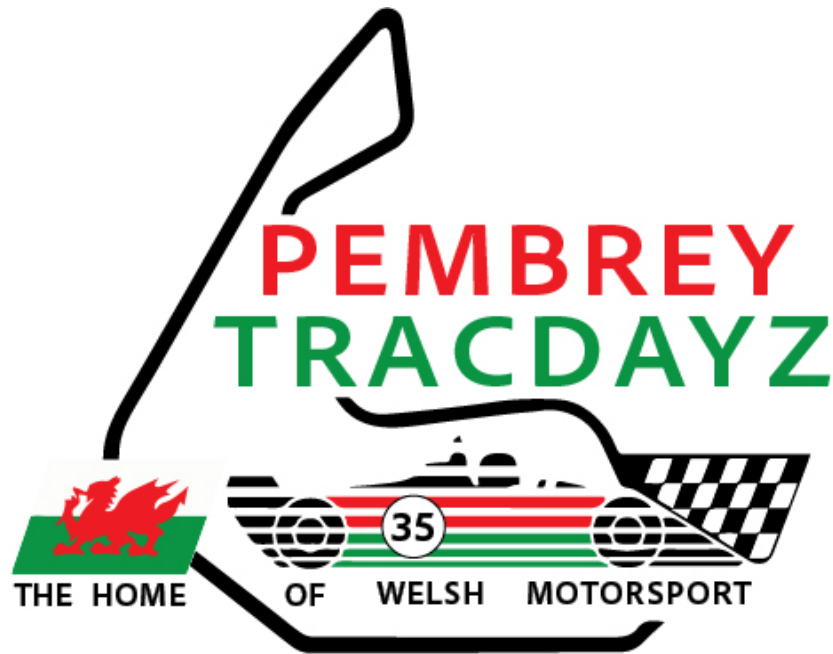
Finish 4.30pm

**All times are subject to change
re incident and recovery protocols.**

MOST IMPORTANTLY...

Have an enjoyable day at **Pembrey Circuit.**

We'll see you in the Assembly Area.



CARS - MOTORCYCLES - RALLY

